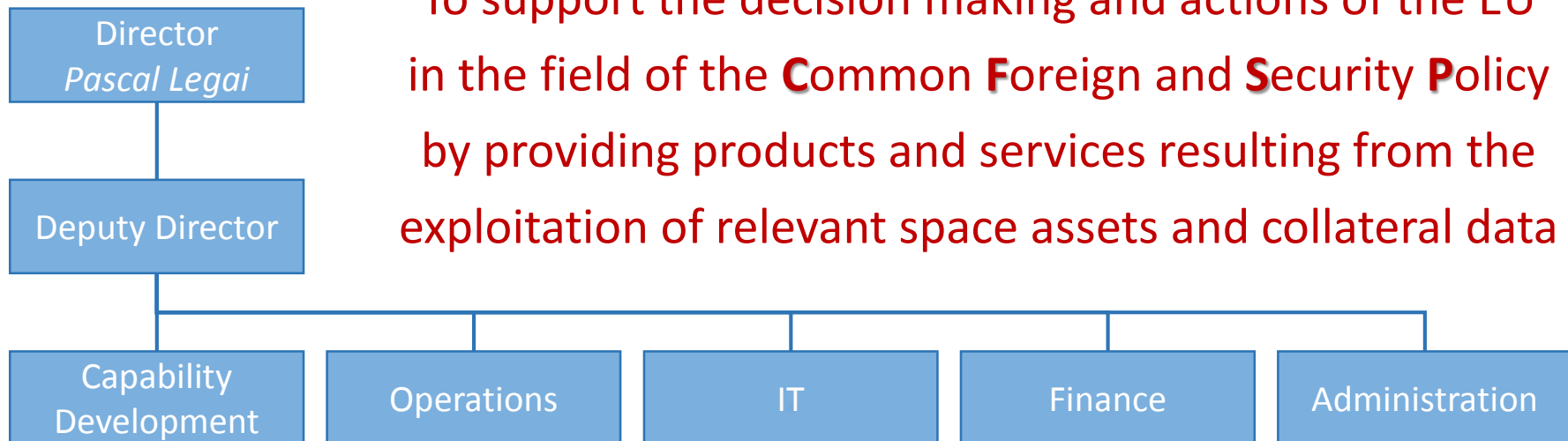


# European Union Satellite Centre (SatCen)

- Agency of the EU Council
- HQ in Torrejón de Ardoz (ES)
- Primary User of EO Satellite Data
- Foreseen role of Service Provider



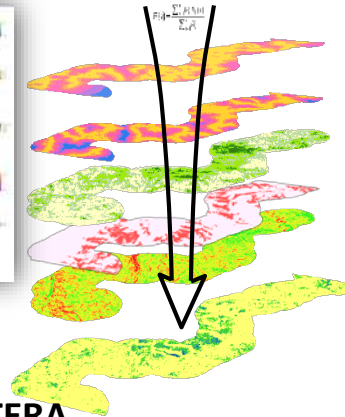
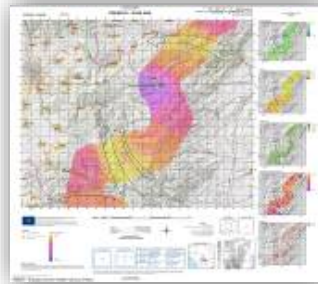
To support the decision making and actions of the EU in the field of the **C**ommon **F**oreign and **S**ecurity **P**olicy by providing products and services resulting from the exploitation of relevant space assets and collateral data



# SatCen Users

## Cartography

- High detail maps
- High precision
- Complex



## Spatial Analysis/TERA

- Value-added Geospatial Information

## Written report

- Summary
- Figures
- Statistics
- Simple



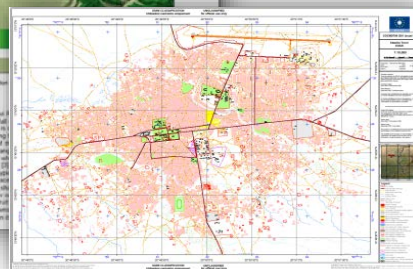
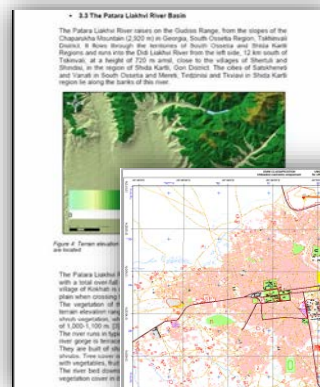
## Field Support

### Written Reports

- Planning operations
- Support to crisis
- Analysis of activity, etc.



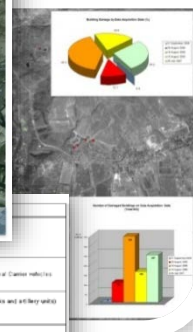
## Planning of Operations



## Decision Making

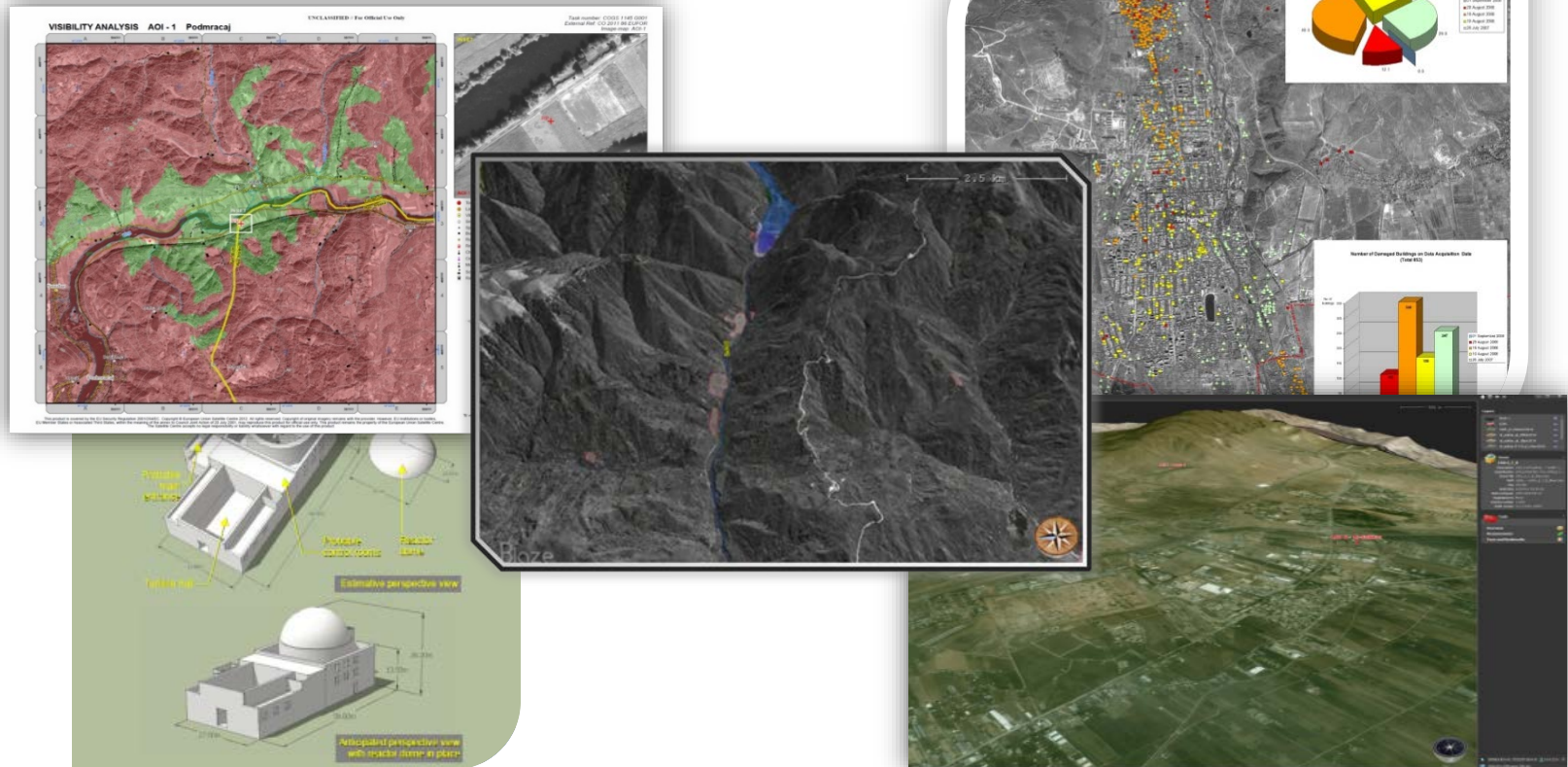


EGYPT PROTESTS	1. Egypt
EGYPT PROTESTS	2. Egypt
EGYPT PROTESTS	3. Egypt
EGYPT PROTESTS	4. Egypt
EGYPT PROTESTS	5. Egypt
EGYPT PROTESTS	6. Egypt
EGYPT PROTESTS	7. Egypt
EGYPT PROTESTS	8. Egypt
EGYPT PROTESTS	9. Egypt
EGYPT PROTESTS	10. Egypt
EGYPT PROTESTS	11. Egypt
EGYPT PROTESTS	12. Egypt
EGYPT PROTESTS	13. Egypt
EGYPT PROTESTS	14. Egypt
EGYPT PROTESTS	15. Egypt
EGYPT PROTESTS	16. Egypt
EGYPT PROTESTS	17. Egypt
EGYPT PROTESTS	18. Egypt
EGYPT PROTESTS	19. Egypt
EGYPT PROTESTS	20. Egypt



# European Union Satellite Centre

Products and services resulting from the exploitation of relevant space assets and collateral data, including satellite and aerial imagery, and related services.



***Making Sense of Data!***



# Recent Events (last five years)

- *Georgian conflict - regional conflict*
- *Somali pirates - failed state, organised crime*
- *Iranian on-going nuclear programme - WMD proliferation*
- *Afghanistan - terrorism and organised crime*
- *Egyptian Arab Spring - regional conflict (revolution)*
- *Libyan uprising - regional conflict (NATO military action)*
- *Syrian crisis - regional conflict (on-going civil war)*
- *Ukraine / Crimea - regional conflict*
- *Europe's Migrant crisis*



***Future - increasing threats to European security***

# Support to EU Missions and Operations, EU Agencies and International Organizations

## EUMM GEORGIA

Border monitoring,  
assessment of military  
facilities and analysis of  
military activity

## EU NAVFOR MED-SOPHIA

Surveillance and  
assessment of human  
smuggling and  
trafficking networks

## EU NAVFOR SOMALIA

Monitoring known  
Pirate Operating  
locations, maritime  
facilities and shoreline  
activity

## OSCE

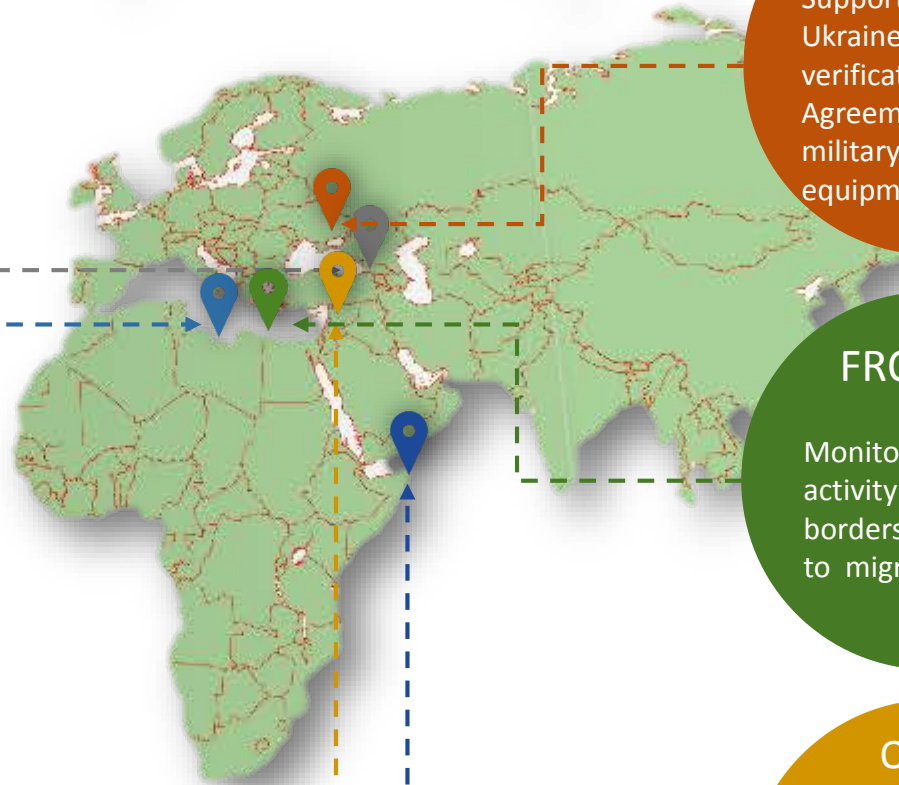
Support to SMM  
Ukraine in the  
verification of the Minsk  
Agreement. Analysis of  
military activity and  
equipment

## FRONTEX

Monitoring of coast  
activity and external  
borders activity related  
to migration crisis

## OPCW

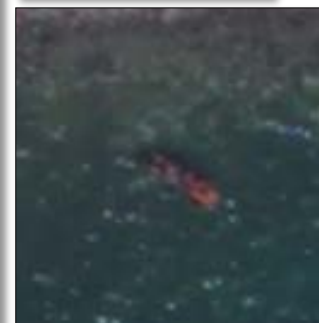
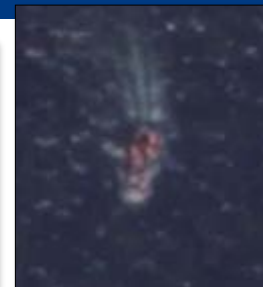
Assessment of facilities,  
site surroundings and  
road network. Support  
to Fact Finding Teams  
and verification of  
Syrian Reports



# Support to FRONTEX



**Monitoring of Coastal Activity**  
Fast Delivery  
Unclassified Level

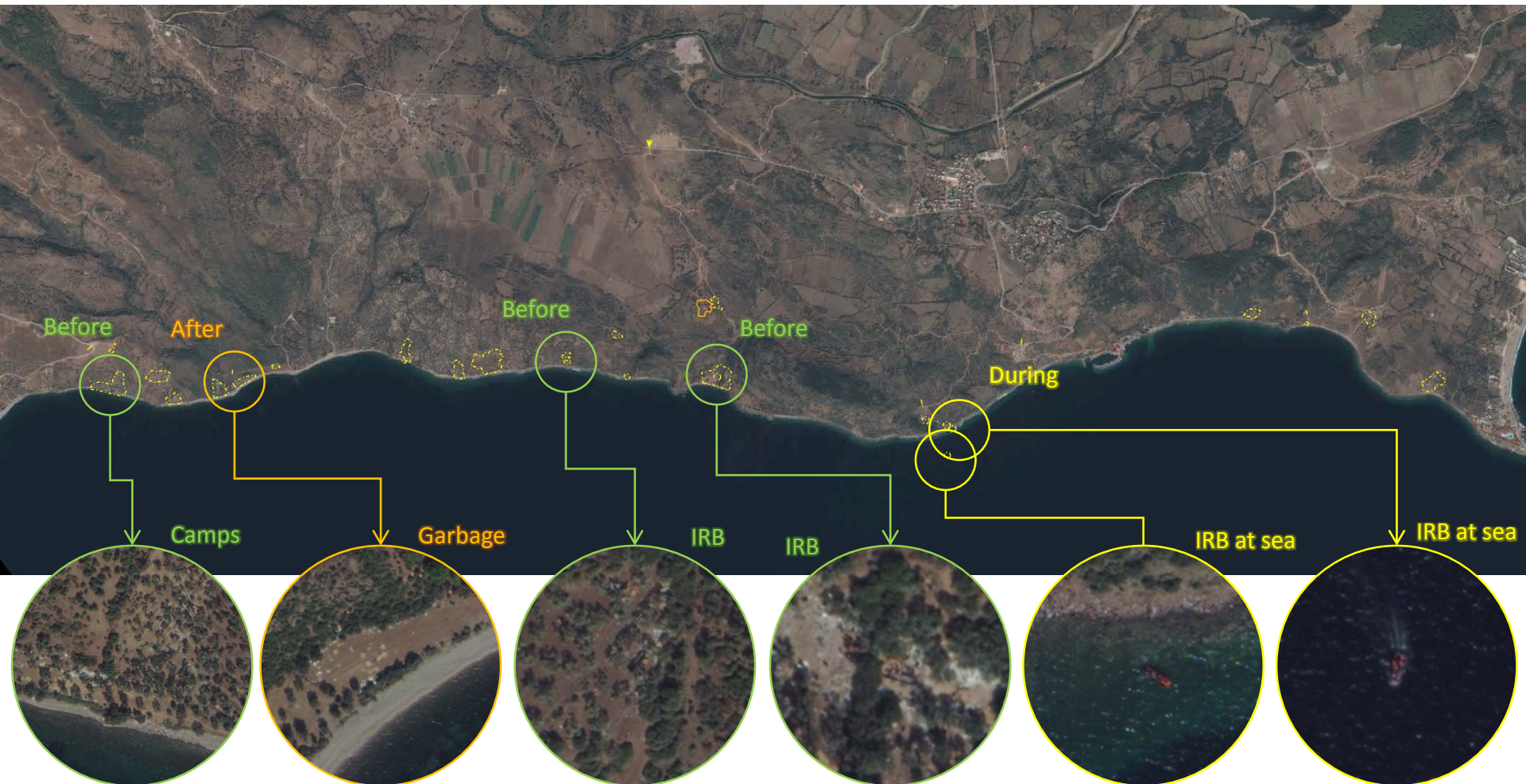


39°29'06''N  
026°20'15''E





# Multiple Indicators of Activity



IRB: Inflatable Rubber Boat

# Space assets used by SatCen

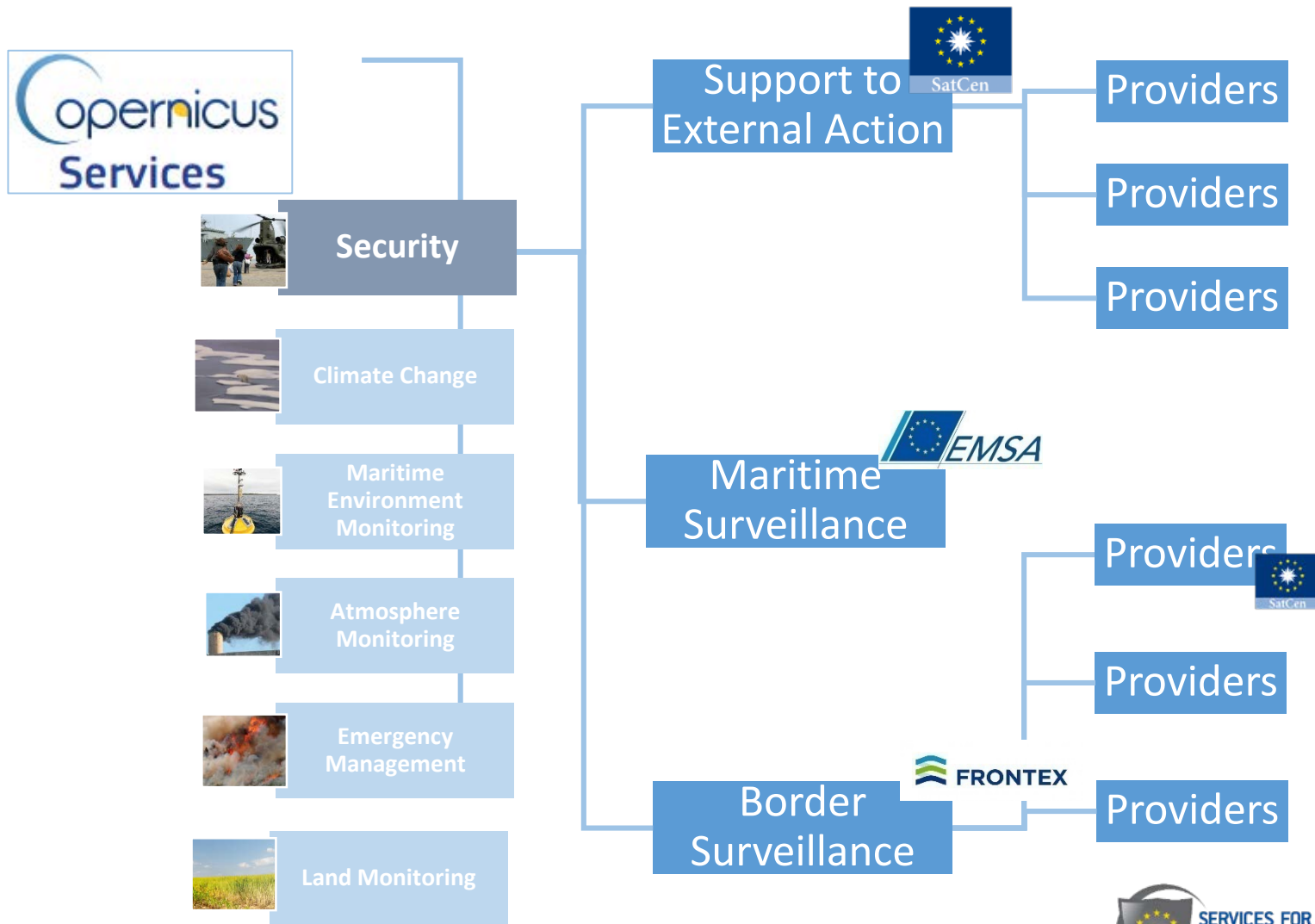
## Commercial Imagery – Unclassified Sensors



## Governmental Imagery – Confidential/Secret UE Sensors



# Copernicus Services for Security Applications



# Way ahead

- Continue the development of improved EO capabilities
- Full integration of sensor information from drones, RPAs up to satellites
- Constant development of satellite data and related services integration
- Strong cooperation between relevant EU entities and key international organisations in the sharing of / access to national assets, data, services...